

Stations of the Cross

Lent 2025

*images and reflections by
All Saints 8th Graders*

I The First Station: Jesus is condemned to death

Jesus being condemned is a symbol of his determination and spirit to do what he thought was right even though he didn't want to die. Sacrificing himself for future causes shows will and power beyond mortal strength; it shows that courage and putting others before yourself for a worthy belief, although hard to do, is always a good thing. Jesus let his death come to him, knowing he couldn't stop it, setting an example for us, now, two thousand years later. Jesus truly was (and is) a great role model.

Jesus' example of ultimate sacrifice tells us to do what's right and know that while there may be consequences, standing up for what we believe in can guide others to follow, just as we try to do now. Like Jesus, we are sometimes called to difficult predicaments; he calls us to forgive and stand strong in face of these hard times. Although violence and resentment may seem an answer, it can only make matters worse.

credits: Jack Towle (text); Calvin Dinh (illustration)



Giulia O
SA

|| The Second Station: Jesus is
made to carry his cross



II The Second Station: Jesus is made to carry his cross

Jesus carrying the cross symbolizes his love and devotion to us. He was made to carry a burden that he knew would cost him his life, but he still carried it with him, proving his love to us. The burden of the cross made Jesus weak and vulnerable, revealing a side of Jesus that many had not witnessed, or expected to see. The burden of the cross allowed others to see Jesus as human. We all carry burdens of our own, and like Jesus, we may fall under the weight of them. This is what makes us human. In his footsteps, while carrying the cross, Jesus led us in faith and encouraged us to follow in his footsteps, to put up with burdens of our own, even if they may make us vulnerable. By struggling and being weak, we can relate, grow, and share in our human nature. By pushing through our burdens and living with faith, we can be like Jesus and have faith in God and our neighbors.

Lord, help us remember the burdens Jesus carried out of his love for us. Let us remember to stay faithful under the pressure of our burdens, and help our neighbors not fall under the weight of theirs.

credits: Madison Ballweber (text); Giulia Oleson (illustration)

III Jesus Falls The First Time

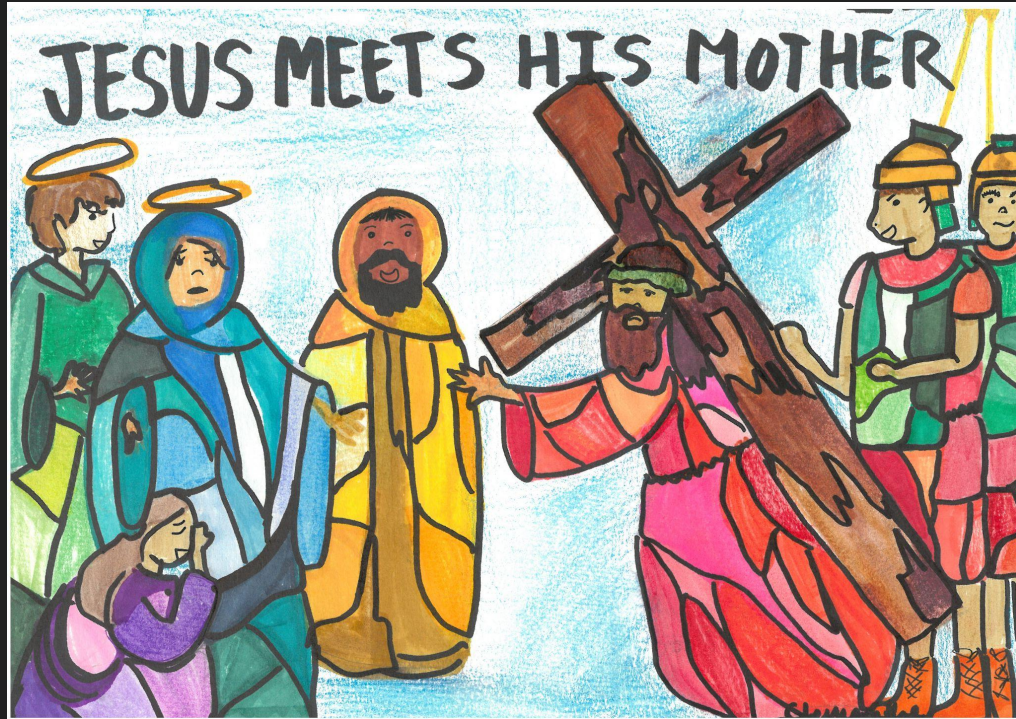


III The Third Station: Jesus falls for the first time

Jesus falls for the first time while carrying the cross. He shows a message of humility and perseverance. Through his actions, Jesus shows us the importance of enduring hardships and carrying our burdens with grace and determination. His fall reminds us that even in our weakest moments, we can find strength.

We strive to follow Jesus' example by persevering through our own struggles and helping others. By rising after our falls and supporting those in need, we embody the empathy and resilience that Jesus demonstrated. This station inspires us to live with faith and determination even through hard challenges.

credits: Clarice Chiang



IV The Fourth Station: Jesus meets his mother Mary

Jesus stops to greet his mother, Mary. Jesus is carrying the heavy load of the cross, but then stops so he can comfort her and to make sure she feels okay, even though he is also suffering. Even though Jesus may be the one who is going through the pain, Mary is also suffering, because she is seeing her own son go through immense torture. Through all of this, Mary makes sure she shows up for her son, and comforts him through all the heartache.

Jesus' example of love shows us that our loved ones will always be there for us, so we should always be there for them. Jesus made sure that he would stop for his mother, so he could comfort her, even through the pain he is experiencing. It wasn't just Mary that Jesus made time for through his suffering. Jesus made time for all of his children, even when he knew he was going to die. He made sure he could spread his eternal love for all of us, so he did.

credits: Savanna Harper (text); Clementine Do-Renteria (illustration)

V The Fifth Station: Simon of Cyrene helps Jesus carry the cross

While Jesus is forced to carry the cross, he grows weak. The soldiers want him to keep moving, so they grab a man from the crowd, named Simon, to help Jesus carry his burden. At first Simon is reluctant. He did not know Jesus well, and certainly did not want to carry a heavy cross. But he did it anyway. Even though they knew nothing of each other they carried the cross together.

Jesus is showing us how you always ask for help when you need it. It does not make you look weak or stupid, because everyone, even Jesus Christ, sometimes needs someone to lean on. Asking for help is not something to be resented, but rather something to embrace. We can also learn a bit from Simon. Even though he did not know Jesus, he still helped him. We should always help anyone who asks, even those who are strangers to us.

credits: Raja McPherson (text); Clyde Carlin (illustration)





VI The Sixth Station: Veronica wipes the face of Jesus

In wiping Jesus' face, St. Veronica shows her courage, stepping out from the crowd to wipe Jesus' face with a cloth, as he carries his heavy cross. The Sixth Station of the cross also shows Jesus mortality, and humility as he takes on struggles of mortal beings. In the act of seeking help from St. Veronica, Jesus shows that he is human just like us and feels pain, as he was bloodied and bruised.

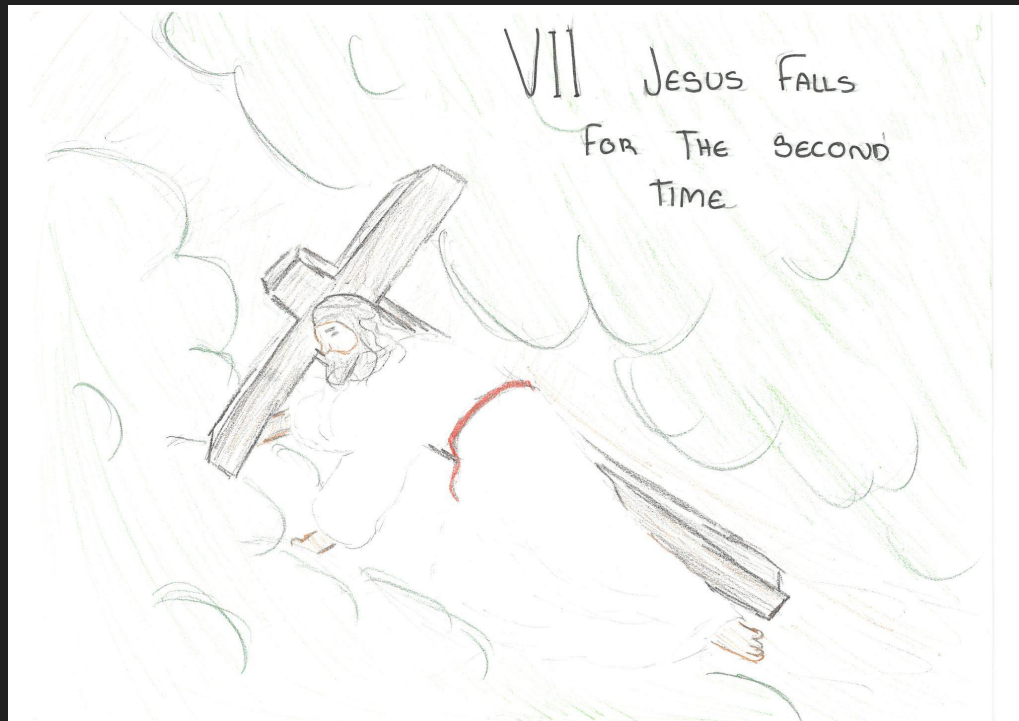
As St. Veronica did, when we witness something bad going on, we can be courageous and step up, sticking up for what is right, despite the backlash we may receive. Like St. Veronica, even if it's a stranger, we can offer our kindness or offer our service and time to help out those in need.

credits: Kien Pham

VII

The Seventh Station:

Jesus falls for the second time



In the 7th Station of the Cross, Jesus falls for the second time while carrying his heavy cross. This moment shows that even though Jesus was tired, exhausted, hurt, and in pain, he got back up and kept going. His actions teach us that we should never give up when life gets hard. Jesus demonstrates that it is okay to mess up; he also shows us that it is acceptable to struggle, but we should always trust in God, keep him in our hearts, and keep moving forward. This station encourages us to be strong and have faith, even when things feel too difficult.

When we feel like giving up and cannot face the problems we can't solve, we can remember how Jesus kept going even when he was tired and in pain. We can pray to Him and ask for His guidance and strength to continue. By helping others, being kind, and showing patience, we will grow in faith and love.

credits: Kyan Tran (text); Violet Fields (illustration)

VIII

The Eighth Station:

Jesus meets the women of Jerusalem

Jesus, weak while he carries the cross, spotted weeping women mourning for him while he carries the burden of the cross. He tells them to not weep for him, but to weep for the children and yourselves. Jesus sends his message by showing his compassion while even suffering, and showing his worry for the people instead of himself. He is also showing us to be selfless human beings, and to always remember to be gracious, and kind. While to also remind us whenever we remember this station to see how he treated others and reflect that in our daily life.

We can strive to be like Jesus by presenting our love and compassion for others in our regular day life, just like he did. Even if we are showing small acts of consideration towards others, it shows our dedication to our world, and people in our life. Through our selfless acts we create a safe place, filled with joy and happiness for others and ourselves showing his teachings in action.

credits: Jane Sicat (text); Cameron Rangel (illustration)





IX

The Ninth Station: Jesus falls for the third time

After being severely weakened, Jesus falls again for the third time. Jesus is extremely weak, almost to the point of death after carrying the cross for such a long distance. However, he knows that his journey is almost at an end. After carrying the burden of the cross for a long time, he finds the strength to continue. We carry burdens of our own and when we are going through dark times we must remain true and faithful to God, whether it be sickness, depression, or the death of a loved one, we must continue to have faith in God and continue to share love with God and others.

May God help us remember everything that Jesus went through, and how he died on the cross for us. We must recognize his burden and the burdens we and others carry. May we carry our burden bravely and help others carry theirs by spreading love and kindness to them, and by staying faithful to God.

credits: Ronan Ganey (text); Phin Eagar (illustration)

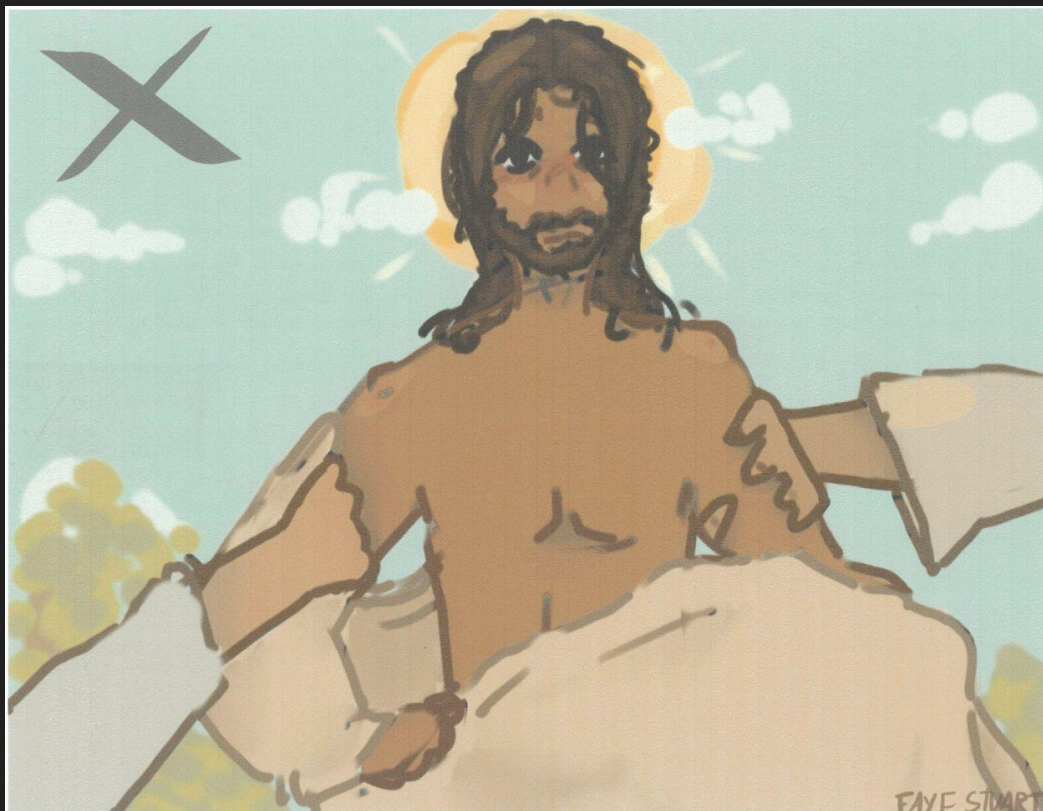
X The Tenth Station:

Jesus is stripped of his garments

Jesus finally reached the spot where he was to be crucified. He had been walking and suffering for a long distance. Before he could be crucified, however, the soldiers stripped his clothes off of him. They did this to shame him in front of a crowd. They thought they could humiliate him before the shouting audience. They had Jesus stand naked in the smoldering sun to force him to suffer more than he already had, right before he died.

Lord, please remind us during these moments that, like Jesus, we should stay humble rather than be affected by the cruelty of others. Let us focus on you, our God, during these trying times.

credits: Faye Stuart

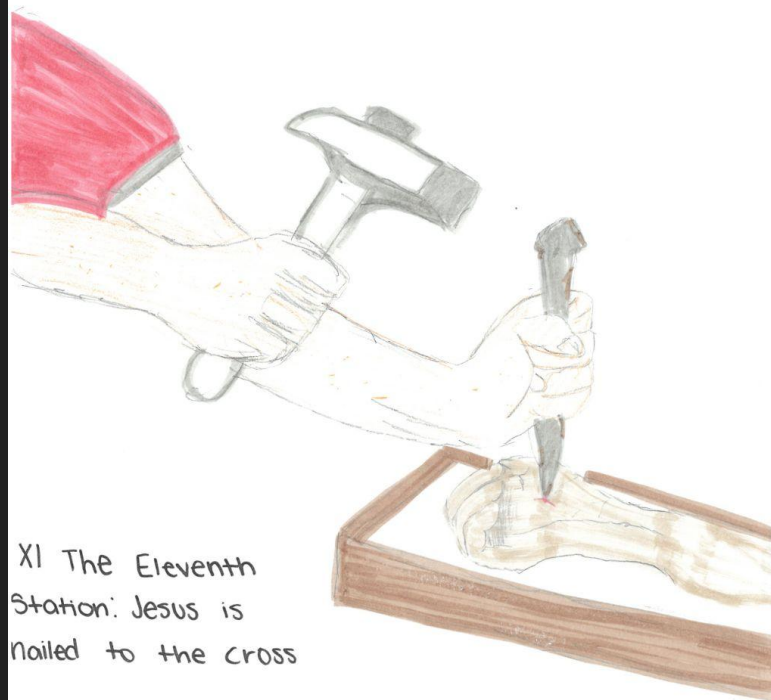


XI The Eleventh Station: Jesus is nailed to the cross

Jesus is stretched out on the cross, his hands and feet nailed in place as he endures excruciating pain. He willingly bears the agony, demonstrating his unconditional love and showing us that his sacrifice is the greatest expression of love and compassion.

Everyone can sacrifice something, especially during Lent, but no one can sacrifice as much as Jesus did. Jesus made the ultimate sacrifice of his life to promise us eternal life. So, the least we can do this Lent season is to sacrifice not our lives, but something that might help someone in need.

credits: Julian Martin (text); Lauren Malen (illustration)



XII

The Twelfth Station: Jesus dies on the cross

Jesus always set a good example for us. Even when on the cross, he showed that people can be forgiven. Through his actions, his highs, and his lows, he showed us what being a good person truly means and how we can act like him. He gave it all for us so that we could do the same for others.

We can respond to Jesus and the example he set in many ways. Maybe it isn't dying for another, but the little things count too. Whether you are picking up trash on the sidewalk or letting someone borrow a pencil. You should always look at the bigger picture and what can help others rather than help yourself. Jesus suffered on the cross for us for 6 hours; the least we can do is put others before ourselves and provide a helping hand for everyone.

credits: Sebastian Graime (text); Henry Gotsch (illustration)

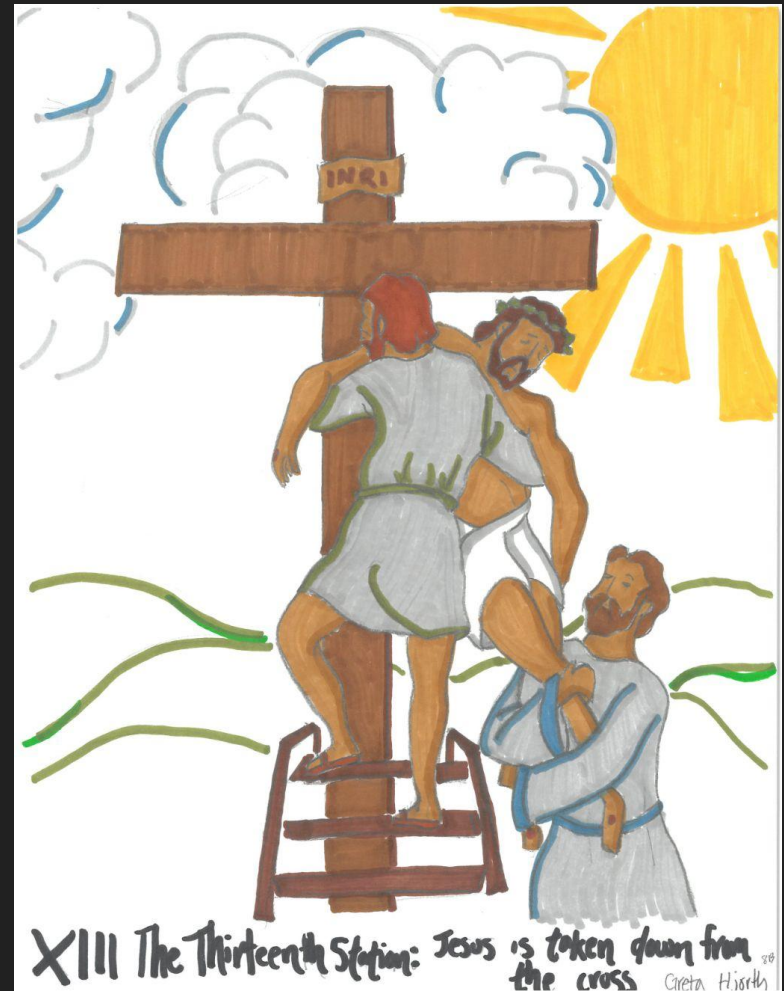


XIII The Thirteenth Station: Jesus is taken down from the cross

After Jesus died on the cross around midday in Jerusalem, he was taken down off the cross by his faithful followers. His followers cleaned his body and carried him to a tomb. Mary and the rest of Jesus' faithful followers with great care laid him in the tomb, put a cloth over his body, and said their final goodbyes. They sealed the tomb closed and Roman guards watched the tomb. After being tortured and suffering a terrible death, Jesus is at peace. We have had to say goodbye to people we have lost in our lives the way Jesus's followers had to say goodbye to Jesus. His followers mourn his death and remember him the same way we grieve in our loss.

Lord, please help all those that have lost friends and relatives recently, please help comfort those that are mourning and help them move on but still remember those they love to help them feel the warmth of your love and the presence of you.

credits: Greta Hjorth (illustration)



XIV

The Fourteenth Station: Jesus is laid in the tomb

When Jesus was laid in the tomb, many mourned his death – some because they were close to him, some because they realized the sacrifice he made for the world. The people looked up to Jesus for guidance, and when he died, they heeded the Corporal Works of Mercy, bury the dead. They honored Jesus, so they buried him as a sign of respect.

Jesus' example shows us that we can sacrifice for the better of everyone else. Whether it be big or small, even just the smallest bit of effort can make a change in the world. Jesus made the ultimate sacrifice for us, and we can do the small part to honor that. We were taught to respect him and can do that through sacrifice and hope. We can overcome these challenges, just as Jesus wasn't stopped by a stone in the way of his tomb.

credits: Erik Wieland (text); Kalia Orian (illustration)

